

# Sailing Instructions



## 1. RULES

- 1.1. This regatta will be governed by the current rules as defined by The Racing Rules of Sailing (RRS).
- 1.2. To be eligible to race, a boat shall enter by meeting the eligibility and entry requirements set forth in the Notice of Race for the 2022 San Diego OCR.
- 1.3. RRS Appendix P, Special Procedures for Rule 42, will apply for the ILCA 6 and 7 class.

## 2. NOTICE TO COMPETITORS

- 2.1. Competitors' meeting are scheduled per NOR 7.1.

## 3. CHANGES TO THE SAILING INSTRUCTIONS

- 3.1. Any change to these sailing instructions (SIs) will be posted on the Official Regatta Notice Board not later than 1000 on the day of the first race to which such changes apply. At the same time, Flag L, accompanied by a sound signal, will be displayed from the venue-specific flagpole.

## 4. SIGNALS MADE ASHORE

- 4.1. Signals made ashore will be displayed from the venue-specific flagpole.
- 4.2. When flag AP is displayed ashore, '1 minute' is replaced with 'not less than 60 minutes.' This changes Postponement Signals in RRS Race Signals.
- 4.3. RRS 40 applies at all times while afloat and signal flag "Y" will not be displayed. This changes the RRS Part 4 preamble.

## 5. SIGNALS MADE AFLOAT

- 5.1. In accordance with RRS 90.2 (c), oral changes to the SIs may be made on the water. A change is in effect when the Race Committee (RC) signal boat displays Flag L over A with one sound signal. This means come within hail of the RC boat to receive the oral changes to the SIs.

## 6. SCHEDULE OF RACES

- 6.1. A maximum of ten (10) races for 3-day classes, and seven (7) races for the 2-day classes are scheduled for the weekend.

## 7. COURSE/CLASS AND CLASS FLAGS

- 7.1. The following list is for class flags and initial start order:

### Course A: Windward/Leeward Course

29er = Pink

Finn = White/Blue Logo

Snipes = White/Red Logo

### Course B: Trapezoid Course

ILCA 4 = Yellow/Red Logo

ILCA 6 = Green/Red Logo

ILCA 7 = White/Red Logo

470 = Green

## 8. RACING AREAS

- 8.1. The starting area for Course A will be in the Coronado Roads approximately 1.75 @ 105 deg. and Course B will be 2.25 nm bearing 125 deg.

# Olympic Classes Regatta - Sailing Instructions

## 9. CHECK IN [DP, NP]

- 9.1. Prior to the warning of her first race of each day, each boat shall check in and be recognized by the RC (located on a vessel near Mark S displaying the Flag L) by passing close aboard on starboard tack and hailing her sail number. When a boat has been recognized, the RC will hail the boat's sail number.

## 10. THE COURSE

- 10.1. No later than the warning signal, the race committee signal vessel will display the course and may display the approximate compass bearing and length of the first leg.
- 10.2. The course will be selected from the Course Chart. All single marks of the course are rounded to port.
- 10.3. In the event a leeward gate is replaced by a single mark, boats shall leave the single mark to port.

## 11. MARKS

- 11.1. SI Addendum A, circle-specific information, contains the description of marks for each racing circle.

## 12. THE START

- 12.1. The starting line will be between a staff with an orange flag displayed on the RC vessel at the starboard end of the start line and the course side of Mark S.
- 12.2. The Race Committee may signal a change of course to the first weather mark during the start sequence for a class as follows: With the preparatory signal, Flag C will also be displayed until it is removed with the starting signal. The change mark will be as described in SI Addendum A. When, in a subsequent change of course a change mark is replaced, it will be replaced with an original mark.
- 12.3. Boats failing to start within four minutes after their starting signal will be scored DNS without a hearing. This changes RRS 63.1, A4, and A5.

## 13. CHANGE OF THE NEXT LEG OF THE COURSE

- 13.1. The race committee may, without signal, move a mark to change the course direction up to 10 degrees or the leg length up to 10% of the previous length, provided that no boat is sailing to that mark.
- 13.2. For more significant changes, or for any other reason, the RC will lay a new mark (or move the finishing line) and signal the change per RRS 33.

## 14. THE FINISH

- 14.1. The finishing line will be between a staff displaying a blue flag on an RC vessel and the course side of Mark F.

## 15. TIME LIMIT

- 15.1. Any boat failing to finish within 15 minutes after the first boat in their fleet sails the course and finishes shall be scored DNF. Any boat dropping out of the race in progress should notify any RC vessel as a safety precaution and proceed directly to the starting area.
- 15.2. The time limit is 1700, if no boats have finished. Any boat racing and not finished by 1715 will be scored DNF for that race. This modifies RRS 35.

## 16. PENALTIES

- 16.1. Appendix V – Alternative Penalties is in effect

# Olympic Classes Regatta - Sailing Instructions

## 17. PROTESTS

- 17.1. Appendix T – Arbitration is in effect.
- 17.2. *RRS 61 is modified to add the additional requirement: A boat intending to protest shall report her intentions and the boat(s) being protested to the RC upon finishing or retiring and obtain RC acknowledgment.*
- 17.3. Request for Hearing forms may be provided at the venue-specific Notice Board or Official Regatta Notice Board online and shall be lodged at the Dockside Room in the SDYC Sailing Center within one (1) hour of the docking time of the R/C finishing boat after the final race of the day. Alternately, a clear photo of both sides of a Request for Hearing form, or electronic form from the US Sailing Rules App, may be emailed to [Protests@sdyc.org](mailto:Protests@sdyc.org) within the same timeframe. The docking time will be posted on the Official Regatta Notice Board online.
- 17.4. Hearings will be heard by an Arbitrator, and if necessary, a protest committee in person, and in the approximate order of receipt. The approximate order and time of hearings will be posted on the Official Regatta Notice Board identifying protesting and protested boats. It is the responsibility of each boat to check the schedule and attend the hearing in a timely manner with all parties and witnesses in order. The Arbitrator or Protest Committee is not responsible for searching for parties or their witnesses.
- 17.5. Hearings not settled by Arbitration will be heard by a protest committee and will be scheduled in agreement with parties to the hearing.

## 18. WITHDRAWAL

- 18.1. A boat intending to withdraw from racing shall attempt to notify any RC vessel, by hail or VHF, of her withdrawal before leaving the race area.

## 19. SCORING

- 19.1. The Low Point System (RRS Appendix A) will apply, modified so that each boat's regatta score will be the total of her race scores, with her worst score discarded if five or more races have been completed. Seven races are scheduled; three completed races shall constitute a regatta.

## 20. TOWING

- 20.1. Towing to the starting area is limited and will be available on a first-come, first-served basis.
- 20.2. Towing for competitors will not be made available if favorable winds of 8+ kts are present at tow time.
- 20.3. When towing is available, competitors should plan to be in the water and ready for towing at the times announced at the competitors' briefing.

## 21. COMMUNICATION

- 21.1. The RC will monitor VHF Ch 69 (Course A), and VHF 73 (Course B) for any radio traffic.
- 21.2. Please contact them in the event of an emergency requiring outside assistance or to notify them of a boat's intent to withdraw from racing per SI 18.1.

## 22. DISCLAIMER OF LIABILITY

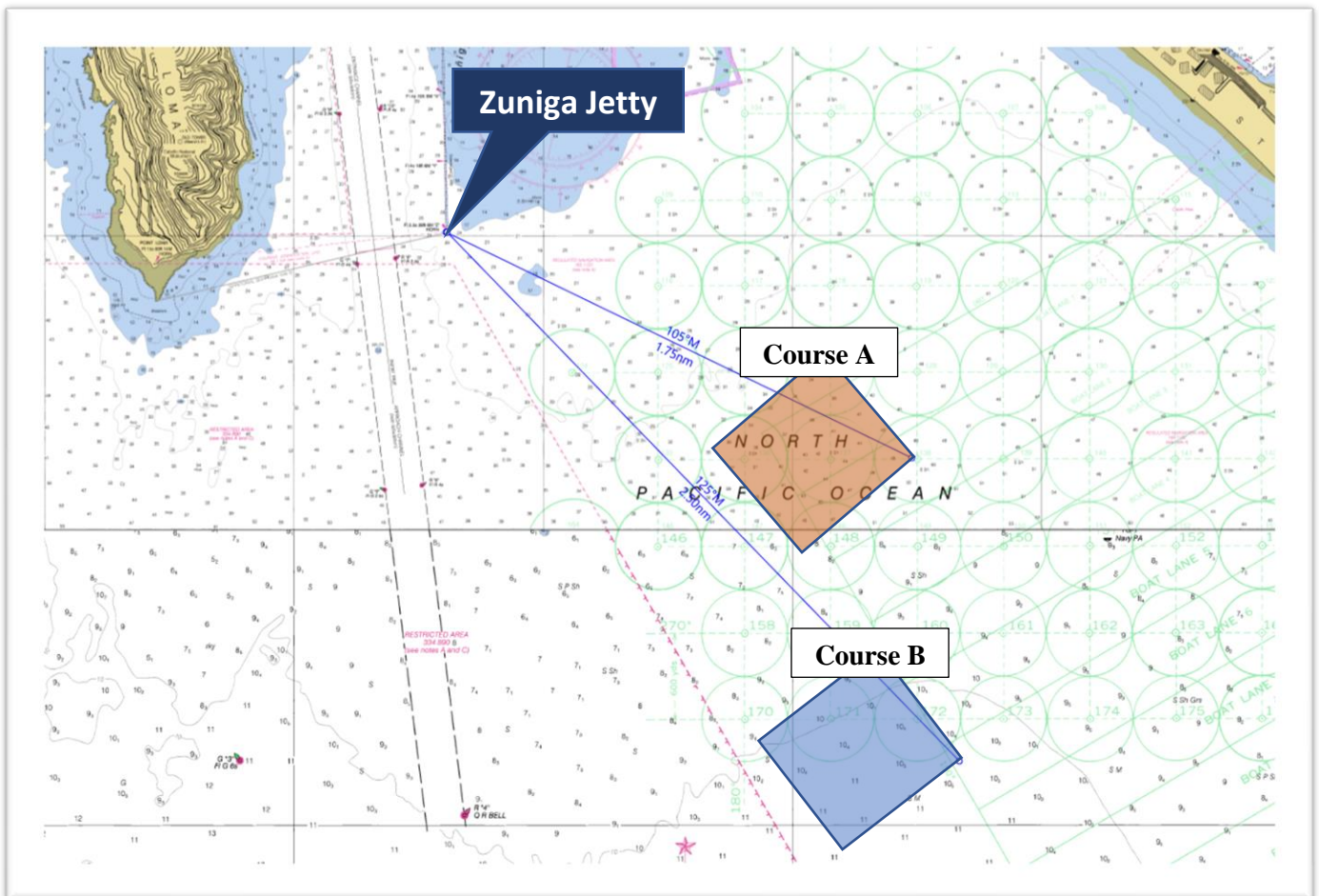
- 22.1. Competitors participate in this regatta entirely at their own risk. See RRS 3 – Decision to Race – “The responsibility for a boat's decision to participate in a race or to continue racing is hers alone.” Host Yacht Clubs, event organizers, and volunteers assisting the event will not accept any liability for material damage or personal injury or death sustained in conjunction with, prior to, or after the regatta.

# Sailing Instructions

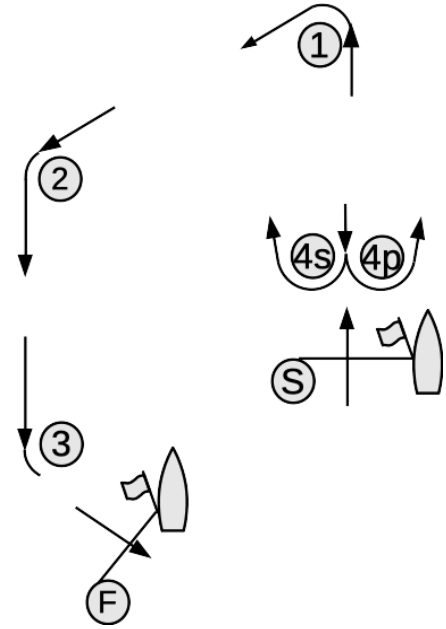
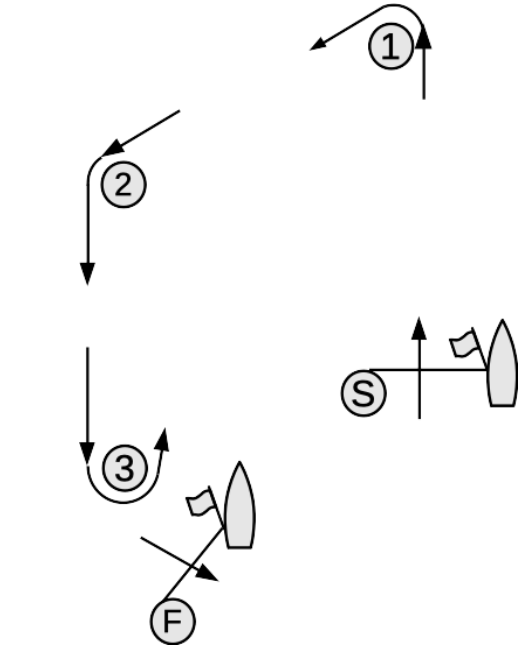
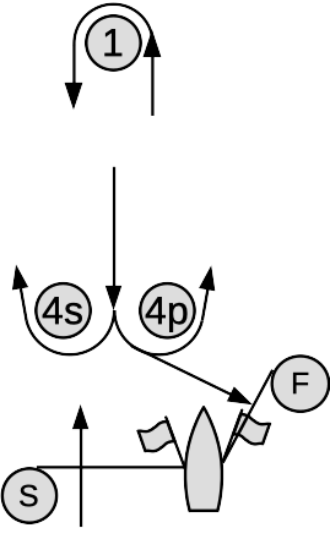
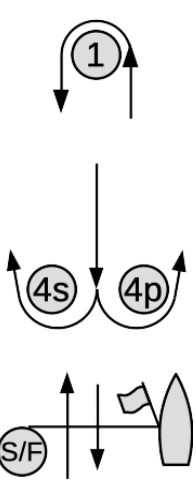
## SI Addendum A – Circle Specific Information

Approximate Circle Center:	Course A	Course B
VHF Channel	69	73
Primary Mark 1	Red Cone	Yellow pylon
Primary Mark 2		Yellow tetrahedron
Gate 3		Yellow tetrahedrons
Gate 4	Red Cones	Yellow pylons
Change Mark	Green tetrahedron	Orange tetrahedron
Start Mark	White cylinder	White cylinder (long) orange ball (short)
Finish Mark	Pink tetrahedron	Red tetrahedron
Finish LR mark	White ball	White ball

## SI Addendum B - Course Locations



## SI Addendum C – Courses

<p><b>I</b></p> 	<p><b>O</b></p> 
<p>I2: S - 1 - 4s/4p - 1 - 2 - 3 - F I3: S - 1 - 4s/4p - 1 - 4s/4p - 1 - 2 - 3 - F</p>	<p>O2: S - 1 - 2 - 3 - 2 - 3 - F O3: S - 1 - 2 - 3 - 2 - 3 - 2 - 3 - F</p>
<p><b>LR</b></p> 	<p><b>L</b></p> 
<p>LR2: S - 1 - 4s/4p - 1 - 4p - F LR3: S - 1 - 4s/4p - 1 - 4s/4p - 1 - 4p - F</p>	<p>L2: S - 1 - 4s/4p - 1 - F L3: S - 1 - 4s/4p - 1 - 4s/4p - 1 - F</p>