



2024 U.S. Youth Championship

June 22 -25, 2024

Organizing Authority: US Sailing
Hosted by Roger Williams University
Bristol, RI

SAILING INSTRUCTIONS

Posted June 20, 2024

Amended June 21, 2024



The notation '[NP]' in a rule means that a boat may not protest another boat for breaking that rule. This changes RRS 60.1(a).

The notation '[DP]' in a rule means that the penalty for a breach of the rule may, at the discretion of the protest committee, be less than disqualification.

1. RULES

1.1. The regatta will be governed by the rules as defined in *The Racing Rules of Sailing*.

1.2. The following documents also apply:

1.2.1. [US Sailing Regulation 10](#). An alleged breach of US Sailing Regulation 10 shall not be grounds for a protest by another boat; this changes rules 60.1(a), 60.2(a), 60.3(a). However, when a protest committee believes that a competitor may have breached Regulation 10.03, it will follow the process described in the [Championships Code of Conduct](#).

1.2.2. [The Conditions for the Youth Championship](#) and the [US Sailing Conditions for Championships](#).

1.2.3. [The US Sailing SafeSport Handbook](#)

1.2.4. [The US Sailing Coaching and Support Boat Policy](#)

1.3. Appendix P – Special Procedures for Rule 42 applies as amended below.

1.4. [DP] Each competitor shall wear at all times while on the water except briefly while changing or adjusting clothing or personal equipment, a USCG-approved life jacket in good condition that is 100% dependent on foam for flotation and the appropriate size for the sailor. Competitors from other countries may wear life jackets approved by their country's maritime authority.

1.56. Rule 60.1 is changed to add: '(d) however, a boat shall not protest another boat for an alleged breach of a class rule other than class equipment measurement rules.'

1.6. ILCA 6 boats shall display top sail numbers provided at registration. This changes Rule G1.1.

2. NOTICES TO COMPETITORS

2.1. Notices to competitors, including protest notifications, will be posted on the Online Official Notice Board (<https://theclubspot.com/regatta/60QaLUbh0H>).

2.2. All questions to the race committee, protest committee or organizing authority must be made in writing and will be answered in writing and posted on the official notice board.



3. CHANGES TO THE SAILING INSTRUCTIONS

3.1. Changes to the sailing instructions will be posted no later than 30 minutes after the close of the morning competitors’ meeting on the day it takes effect, except that during a postponement ashore a change may be posted before the removal of the AP flag. Any change to the schedule of races will be posted no later than the protest time limit or 1800 hrs., whichever is later, the day before the change will take effect.

4. SIGNALS MADE ASHORE

- 4.1. Signals made ashore will be displayed from a flagpole at the regatta tent.
- 4.2. When AP is displayed ashore, the warning signal for the next race will be made no fewer than 60 minutes after AP is lowered. This changes Race Signals AP.
- 4.3. Flag D with one sound means ‘Boats from the specified class may leave the beach. The warning signal will be made no fewer than 60 minutes after flag D is displayed.’ Boats shall not leave the harbor until this signal is made.
- 4.4 The OA and RC will announce postponements, harbor launch times and other information via WhatsApp. Competitors are responsible for monitoring OA and RC announcements.

5. SAFETY [DP] [NP]

- 5.1. A boat retiring from a race shall notify a race committee vessel before leaving the course or, when that is impossible, immediately after arrival ashore.
- 5.2. Private drones are prohibited. Drones may be authorized by the OA for its purposes.

6. SCHEDULE

6.1. The schedule is as follows:

| | | |
|-------------------|--|--|
| Saturday, June 22 | 1000-1600 1200-1600 1400 1700 1800 | Registration for sailors and coaches Designated optional practice time Practice Race (individual fleets may be postponed to test courses) Opening Ceremony and mandatory Competitors Meeting Mandatory Support Persons (Coach) and Spectator Meeting |
| Sunday, June 23 | 0930 1200 1730 | Mandatory Competitors Meeting Warning signal for first race of the day Regatta Celebration Dinner |
| Monday, June 24 | 0930 1200 | Mandatory Competitors Meeting Warning signal for first race of the day |
| Tuesday, June 25 | 0900 1130 1400 1500 ASAP | Mandatory Competitors Meeting Warning signal for first race of the day No warning Signal after 1400 1500 Awards Ceremony |

6.2. The Race Committee intends to run no more than fourteen (14) races for the 29er and Nacra classes and ten (10) races for the ILCA 7, ILCA 6 and i420 classes.

7. CLASS FLAGS

7.1. Class flags are:

| Class | Flag |
|-------|------|
|-------|------|



| | |
|----------|-----------------------------|
| ILCA 7 | White w/ Red ILCA logo |
| ILCA 6 | Green w/ Red ILCA 6 logo |
| i420 | Red and Blue 420 Class Flag |
| 29er | White w/ Red 29er logo |
| Nacra 15 | White w/ Blue Nacra logo |

8. RACING AREA

The racing area is shown in Attachment A. Classes will sail in the following circles:

8.1 Race Circle 1 – 29er, i420 and Nacra 15

8.2 Race Circle 2 – ILCA 6 and ILCA 7

9. THE COURSES

9.1. The diagrams in Attachment B show the courses, including the order in which marks are to be passed and the side on which they are to be left.

9.2. The race committee will post the course to be sailed on the signal boat.

9.3. If one of the gate marks is missing, boats shall round the remaining mark to port.

10. MARKS

10.1. Race Circle 1 (W/L)

10.1.1. Nacra 15s will sail to orange windward and offset inflatable marks (the “long windward marks”)

10.1.2. 29ers and i420s will sail to yellow windward and offset inflatable marks (the “short windward mark”)

10.1.3. Gate marks will be orange inflatable marks

10.1.4. Starting mark will be an anchored pin boat or a ~~red~~ yellow inflatable mark

10.1.5. Finishing mark will be a green inflatable mark

10.2. Race Circle 2 (trapezoid or W/L):

10.2.1. Turning marks will be markbots or inflatable marks

10.2.2. Starting mark will be an anchored pin boat or markbot

10.2.3. Finishing mark will be a markbot or inflatable mark

11. THE START

11.1. The starting line will be between a staff displaying an orange flag on the race committee signal vessel and either a staff displaying an orange flag on the port end race committee vessel or the course side of the port end starting mark.

11.2. To alert boats that the race will begin soon, the RC will display the orange line flag on the signal vessel with one sound at least 5 minutes before the warning signal is displayed.

11.3. After a race, the race committee intends to post the sail numbers of boats that are scored UFD or BFD as a courtesy.

11.4. A boat that does not start within four (4) minutes after her starting signal will be scored Did Not Start (DNS) without a hearing. This changes Rule A5.1 and A5.2.

12. COURSE CHANGES

12.1. To change the next leg of the course, the race committee will (a) move the original mark to its new location, or (b) lay a new mark of the same color, or (c) move the finishing line, or (d) move the leeward gate (original marks). When a new mark is laid, the original mark will be removed as soon as possible.

12.2 If the race committee changes the location of the original windward mark, there will be no offset mark.



12.3. The race committee may adjust the course up to 10 degrees in bearing or 0.1nm in length without signaling a change. This changes Rule 33.

13. THE FINISH

13.1. The finishing line will be between a staff displaying a blue flag on the finish line vessel and a staff displaying a blue flag on the pin vessel or the course side of the nearby finishing line mark (see SI 10).

14. TIME LIMITS

14.1. The following time limits apply:

| Class | Time Limit | Mark 1 time limit | Finish window |
|--------------------|------------|-------------------|---------------|
| 29er, i420, Nacra, | 75 minutes | 20 minutes | 15 minutes |
| ILCA 7, ILCA 6 | 75 minutes | 20 minutes | 20 minutes |

14.2. If no boat has passed Mark 1 within the Mark 1 time limit, the race will be abandoned.

14.3. Boats still racing and failing to finish within the finish window after the first boat in their class sails the course and finishes, and not subsequently retiring, penalized, or given redress, will be scored DNF.

15. PENALTY SYSTEM

15.1. RRS Appendix P, Special Procedures for Rule 42, applies.

15.1.1. RRS Appendix P2.2 is changed as follows: "When a boat is penalized a second or subsequent time during the event, she shall promptly retire. If she fails to do so she shall be disqualified without a hearing and her score shall not be excluded."

15.1.2. RRS Appendix P2.3 is deleted.

15.2. For the 29er and Nacra classes, RRS 44.1 and RRS Appendix P2.1 are changed to replace the Two-Turns penalty with the One-Turn penalty.

15.3. RRS Appendix T1, Post-Race Penalties, applies.

16. HEARING REQUESTS

16.1. Hearing request forms, scoring inquiry forms and penalty acceptance forms will be available at the protest desk located outside the regatta tent.

16.2. The protest time limit is 45 minutes after the race committee signal vessel for each respective course area docks. The race committee will post the protest time limit for each race area.

16.3. If a scoring inquiry was filed within the protest time limit, a request for redress arising from that inquiry will be considered timely.

16.4. Notices of actions taken by the race committee or the protest committee and a list of boats penalized under Appendix P will be posted on the official notice board.

16.5. Notices of protests by the race committee or protest committee will be posted to inform boats under Rule 61.1(b).

16.6. As soon as practicable after a protest or request for redress has been filed, the protest committee will post a notice to inform competitors of the schedule and location of hearings in which they are parties or named as witnesses.

17. SCORING

17.1. A boat's series score will be the total of her races scores, excluding her worst score after ~~five (5)~~ **four (4)** races have been completed.

17.2. ~~Three (3)~~ **Four (4)** races are required to be completed to constitute a series.



- 17.3. The series for ILCA 6 will consist of a qualifying round and a final round of gold and silver fleets. Boats will be assigned to the gold or silver fleet based on their qualifying round scores. Scores from races in both rounds will be used to determine a boat's final series score.
- 17.3.1. Boats in the qualifying round will be assigned to yellow and blue fleets of as nearly equal sizes as possible.
 - 17.3.2. Each boat shall display while racing a colored band corresponding to the fleet to which she has been assigned, securely taped to the mast below the gooseneck where it is clearly visible.
 - 17.3.3. The qualifying round consists of the races completed for both fleets until the day that ~~three (3)~~ **four (4)** races have been completed by both fleets. All races on that day will be counted for the qualification series for the purpose of the gold and silver fleet splits.
 - 17.3.4. During the qualifying round, after each day's racing, if one or more races have been completed that day, boats will be reassigned to fleets based on the series scores to date. Reassignments will be made by scoring both fleets as one and assigning boats to new fleets through the (1, 2, 2, 1, 1, 2, 2, 1) method.
 - 17.3.5. At the conclusion of the qualifying round, boats will be assigned to gold (yellow) or silver (blue) final round fleets. If one fleet has completed fewer races in the qualifying round than the other, the assignment will be calculated using those races completed by both fleets. Any extra race(s) completed by one fleet to that point will not be included in the final series scores for either the gold or silver fleet.
 - 17.3.6. In the final round, the gold and silver fleets will be scored separately, and one fleet does not need to complete the same number of final series races as the other fleet.
 - 17.3.7. Boats sailing in split fleets and scored in accordance with Rules A5.1 or 5.2 shall be scored using the number of entrants in the largest fleet being sailed in her class for that round.
 - 17.3.8. Fleet splits will be announced and posted at the competitors meeting on the day they take effect.

18. REPLACEMENT OF CREW OR EQUIPMENT [DP]

- 18.1. Substitution of competitors or repair or replacement of hulls, sails or equipment is permitted only with prior written approval of the organizing authority. See [US Sailing Championship Conditions](#).

19. COACH, SPECTATOR AND SUPPORT VESSELS [DP][NP]

- 19.1. This is a Grade 1 Event as defined in the [US Sailing Championship Coaching and Support Boat Policy](#).
- 19.2. Private spectator vessels will be permitted. All spectator vessels must attend the mandatory Support Persons and Spectator Boat meeting on Saturday and fly a supplied flag when near the course areas.
- 19.3. Refer to Attachments C and D for further instructions and specific conditions.

20. ELECTRONIC EQUIPMENT AND COMMUNICATIONS [DP]

- 20.1. While racing, boats shall not carry aboard or use a GPS device or VHF radio.
- 20.2. While racing, except in an emergency, a boat shall not make voice or data transmissions and shall not receive voice or data communication that is not available to all boats.

21. DISCIPLINE [DP][NP]

- 21.1. Competitors are considered to be attending the championship from the moment that they arrive at the venue until they leave the venue for home or the airport.
- 21.2. Per US Sailing Regulations 10.03.B, no contestant shall use, either on or off the water, marijuana or any other substance if possession is illegal under state or federal law, or any alcoholic beverages. This regulation shall be in effect from the competitor's arrival at the venue through their departure from the venue and including transport to and from the venue. An alleged breach of one of these regulations shall not be grounds for a protest. However, when the protest committee believes that a competitor



may have breached one of these regulations, it shall follow the process described in the Championship Code of Conduct. If a competitor is found to have breached one of these elements within the Code of Conduct, they shall be excluded from the remaining races of the series and, where practicable, removed from the regatta venue and sent home. The competitor's boat shall be disqualified from all races of the series.

22. PRIZES

- 22.1. US Sailing Championship medals will be awarded to the top five (5) competitors (singlehanded) or teams (doublehanded) in classes with twenty-five or more entries, top three (3) competitors/teams in classes with ten or more entries, and top two (2) competitors/teams in classes with fewer than ten entries.
- 22.2. US Sailing Championship medals will be awarded to the top three (3) female competitors (singlehanded) / female teams (doublehanded) in classes with eight or more all-female entries, top two (2) in classes with five or more all-female entries, and top one (1) in classes with less than five all-female entries.
- 22.3. The Manton D. Scott Memorial Trophy will be awarded to the winning Doublehanded Dinghy (i420) team.
- 22.4. The Robert L. Johnstone III Trophy will be awarded to the winning Singlehanded (ILCA 7) competitor.
- 22.5. The Robert and Ann Conner Trophy will be awarded to the winning Singlehanded Dinghy-Light (ILCA6) competitor.
- 22.6. The Arthur D. Stevens Trophy will be awarded to the winning Multihull team.
- 22.7. The Trevor Moore Trophy will be awarded to the winning Doublehanded Skiff (29er) team.
- 22.8. The David M. Perry Perpetual Sportsmanship Trophy will be awarded in each class.
- 22.9. The Smythe Trophy will be awarded to the top new singlehanded sailor (sailing in their first U.S. Youth Championship) in the largest singlehanded fleet.
- 22.10. The Bemis Trophy will be awarded to the top new doublehanded team (both sailors sailing in their first U.S. Youth Championship) in the largest doublehanded fleet.
- 22.11. Competitors entered in accordance with NoR 4.5 (non-USA MNAs) are eligible to win US Sailing medals (NoR 18.1 & 18.2) but are not eligible to win perpetual trophies (NoR 18.3 – 18.11).

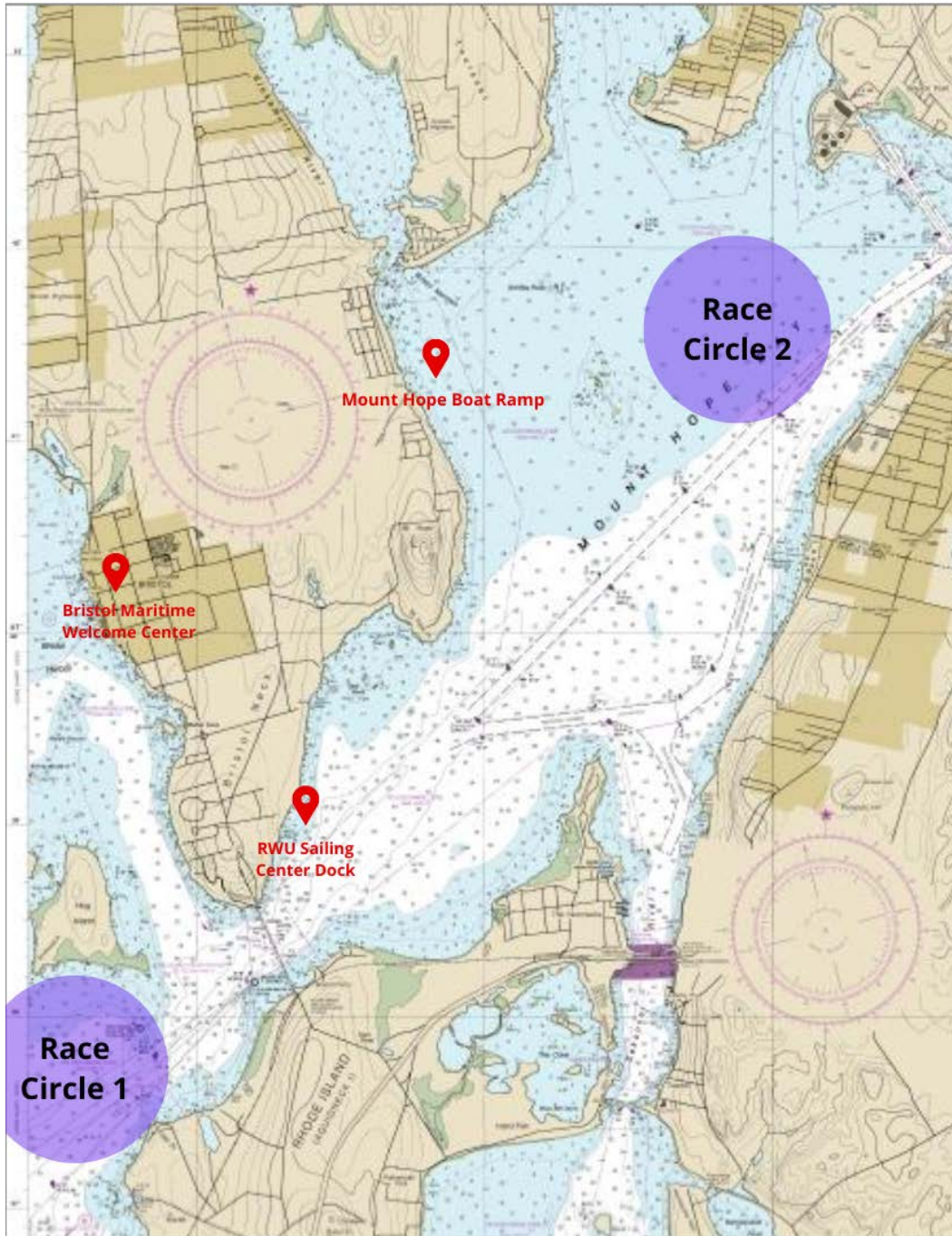
23. RISK, DISCLAIMER OF LIABILITY & PERSONAL CONDUCT

- 23.1. Competitors participate in the regatta at their own risk. See Rule 3, Decision to Race. The organizing authority and event volunteers will not accept any liability for material damage or injury or death sustained in conjunction with or prior to, during or after the regatta.
- 23.2. By participating in the regatta, competitors accept responsibility for their actions during any event-related activity. This includes on-shore activities before, during and after the regatta.
- 23.3. Competitors are expected to maintain the highest levels of conduct throughout the event. Enforcement of discipline and conduct shall be conducted as per Rule 69.2, the Championship Code of Conduct and/or the policies and procedures of US Sailing (Regulation 15.01).

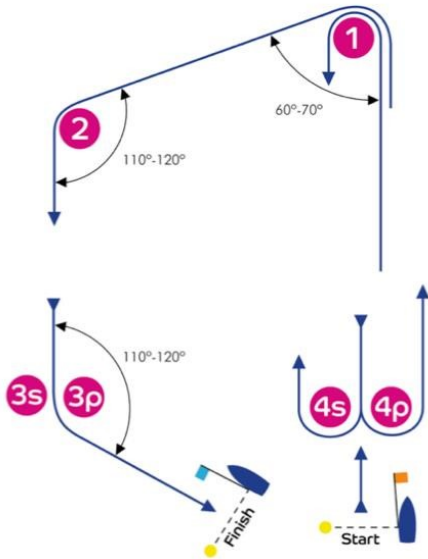
24. FURTHER INFORMATION

- 24.1. All official notices, forms, lists and results will be posted on the Official Notice Board:
<https://theclubspot.com/regatta/60QaLUbh0H>
- 24.2. Event Website: <https://www.ussailing.org/competition/championships/2024-u-s-youth-championship->
- 24.3. US Sailing website - Youthchampionships@ussailing.org

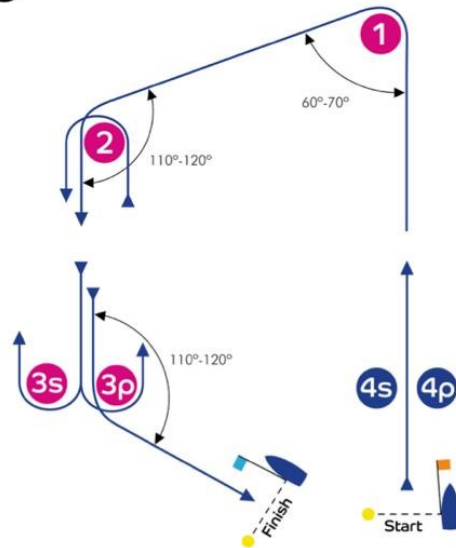
ATTACHMENT A: Racing Areas



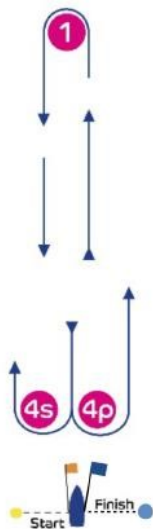
ATTACHMENT B-Course

I

Course: Inner Trapezoid

| Signal | Mark Rounding Order |
|--------|---|
| I2 | Start - 1 - 4s/4p - 1 - 2 - 3p - Finish |
| I3 | Start - 1 - 4s/4p - 1 - 4s/4p - 1 - 2 - 3p - Finish |
| I4 | Start - 1 - 4s/4p - 1 - 4s/4p - 1 - 4s/4p - 1 - 2 - 3p - Finish |

O

Course: Outer Trapezoid

| Signal | Mark Rounding Order |
|--------|---|
| O2 | Start - 1 - 2 - 3s/3p - 2 - 3p - Finish |
| O3 | Start - 1 - 2 - 3s/3p - 2 - 3s/3p - 2 - 3p - Finish |
| O4 | Start - 1 - 2 - 3s/3p - 2 - 3s/3p - 2 - 3s/3p - 2 - 3p - Finish |

L

Course: Windward/Leeward

| Signal | Mark Rounding Order |
|--------|--|
| L2 | Start - 1 - 4s/4p - 1 - Finish |
| L3 | Start - 1 - 4s/4p - 1 - 4s/4p - 1 - Finish |
| L4 | Start - 1 - 4s/4p - 1 - 4s/4p - 1 - 4s/4p - 1 - Finish |

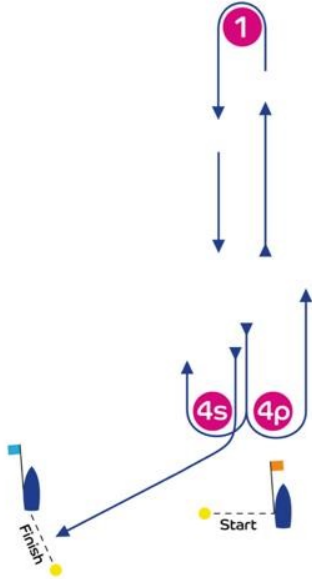
LA

Course: Same as Course L except with Offset Mark 1A

| Signal | Mark Rounding Order |
|--------|--|
| LA2 | Start - 1 - 1a - 4s/4p - 1 - 1a - Finish |
| LA3 | Start - 1 - 1a - 4s/4p - 1 - 1a - 4s/4p - 1 - 1a - Finish |
| LA4 | Start - 1 - 1a - 4s/4p - 1 - 1a - 4s/4p - 1 - 1a - 4s/4p - 1 - 1a - Finish |

ATTACHMENT B-Courses continued

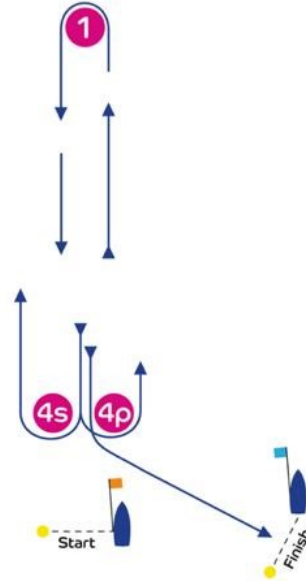
LG



Course: Windward/Leeward

| Signal | Mark Rounding Order |
|--------|---|
| LG2 | Start - 1 - 4s/4p - 1 - 4s - Finish |
| LG3 | Start - 1 - 4s/4p - 1 - 4s/4p - 1 - 4s - Finish |
| LG4 | Start - 1 - 4s/4p - 1 - 4s/4p - 1 - 4s/4p - 1 - 4s - Finish |

LR



Course: Windward/Leeward

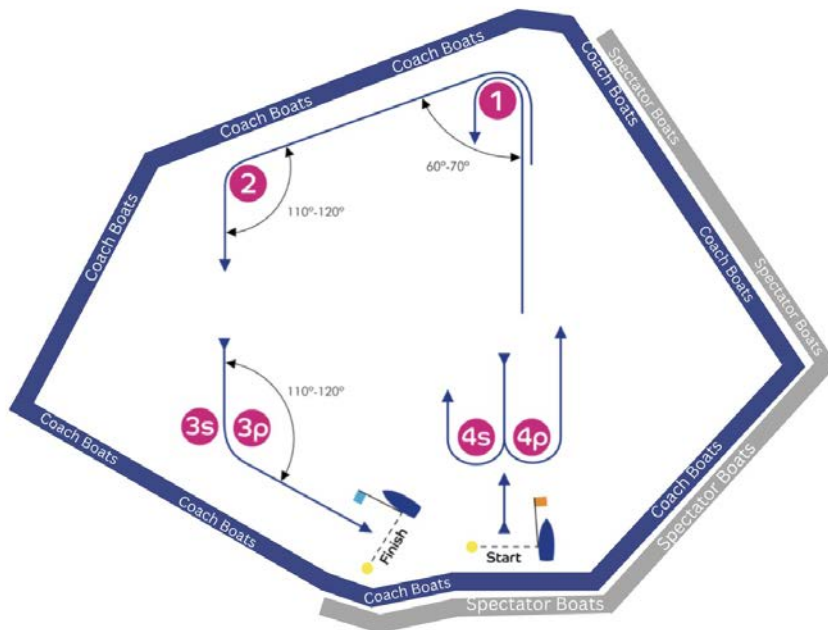
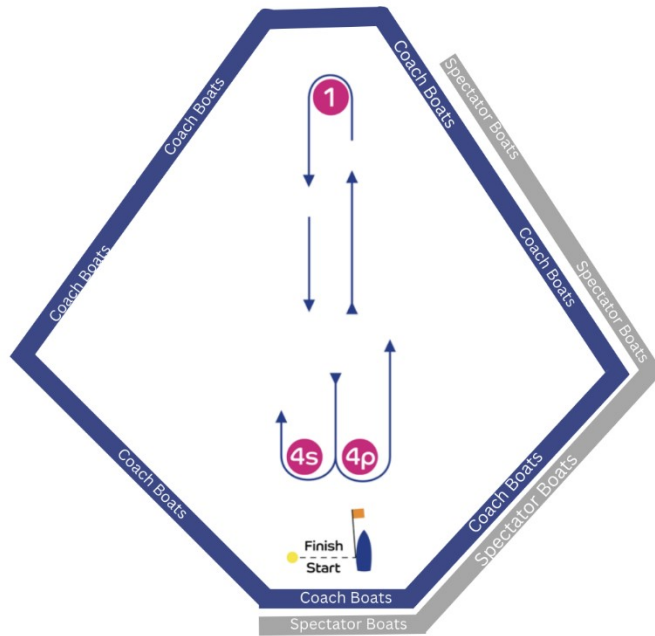
| Signal | Mark Rounding Order |
|--------|---|
| LR2 | Start - 1 - 4s/4p - 1 - 4p - Finish |
| LR3 | Start - 1 - 4s/4p - 1 - 4s/4p - 1 - 4p - Finish |
| LR4 | Start - 1 - 4s/4p - 1 - 4s/4p - 1 - 4s/4p - 1 - 4p - Finish |

ATTACHMENT C

Position Boxes for Coaches and Spectators

Coach Boats - 200' from lay lines/ above windward mark/ below start - finish areas

Spectator/ Support Boats - Limited to Starboard side of the course, below the windward mark – 500' from lay lines / starboard of windward mark/ below start – finish areas





Attachment D

Instructions for Support (Coach) and Spectator Vessels

D1 The objective of this attachment is to augment the safety resources attached to the regatta and to provide a clear and fair racing area.

D2 Except when rendering assistance to a boat in danger, or at the request of the race committee, support persons and spectators shall remain outside the racing area as defined in Attachment C from the time of the warning signal for the first fleet to start until all boats have finished or the race committee signals a postponement or abandonment.

D2.1 Support vessel occupants must meet the requirements of the [US Sailing Championships Coaching and Support Boat Policy](#). The vessel shall display the numbered coach flag assigned at registration.

D2.2 At no time shall spectator vessels (those vessels not designated as race committee or support) enter the area being used by the racing boats, communicate with racing boats during or between races, or provide other support to racing boats during or between races. Spectator vessels must stay 500 feet outside the racecourse and are limited to the right side of the course, as shown in Attachment C. All spectator vessels shall display the numbered spectator flag assigned at registration.

D3 A representative from each support and spectator vessel shall attend the Coach and Spectator Meeting following the Opening Ceremony. Private coaches must also agree to work with the US Sailing Coaches for their respective fleets to provide assistance as needed.

D4 Support and spectator vessels shall monitor the race committee VHF channel and shall immediately follow all instructions from the race committee and the organizing authority, especially when Flag V has been displayed in that race area. At no time shall any spectator or support vessel interfere in the conduct of the race. At no time during racing shall any racing boat approach or signal a support or spectator vessel, nor shall a support or spectator vessel approach or signal any racing boat except in an emergency.

D5 The race committee reserves the right to restrict support vessels and spectator vessels to a box below the starting line for the entire race and / or make any other rules to ensure the quality of the racing and the safety of the competitors.